



**An Invitation to Apply:
Temple University
Chair of the Department of Public Health**

THE SEARCH

Temple University, with the appointment of a new President, Ann Weaver Hart, is undergoing a renaissance in its academic mission of research and teaching that includes the hiring of over 300 new research-focused faculty members. The Department of Public Health has been one of the areas targeted for additional growth over the next decade. In the past three years, the Department has added 13 full-time faculty members, continued to expand its portfolio of federally-funded research programs, and added several vibrant graduate programs, including a new PhD in Public Health. To continue this momentum and shape the future of Public Health at Temple, we are seeking an experienced, dynamic and visionary leader to chair the Department of Public Health.

The new Chair will have an unprecedented opportunity to expand and shape the direction of research and to ensure academically rigorous educational programs. The successful candidate is expected to bring a program of funded research and nationally recognized scholarship to an already comprehensive set of public health research and academic programs, including one of the first CEPH-accredited undergraduate degree programs, as well as masters and doctoral degrees and global programs. Candidates must be eligible for tenured appointment at the Associate or Full Professor level.

The successful candidate will promote the vision, mission and values of the Department of Public Health and move the Department toward realizing its strategic plan in such key areas as: remaining at the forefront of public health research and education to be competitive and responsive to the changing training needs of the public health workforce; developing functional internal divisions to reflect areas of public health specialization within the Department (e.g., epidemiology, environmental health, behavioral sciences, policy) and to streamline administration and create intellectual “homes” for faculty and students; forging ties with other academic units within Temple University conducting research and teaching related to public health, including the Medical, Dental, Law, and Business Schools; expanding undergraduate Public Health education, practice and research opportunities; developing enrollment management processes and course scheduling for each program; increasing efficiencies regarding external funding for research; increasing funding and research opportunities for graduate students;

developing mechanisms for rewarding extraordinary service and achievements of staff, faculty and students; and creating an effective governance structure.

Salary and rank will be commensurate with experience and credentials.

QUALIFICATIONS

The successful candidate will:

1. Have held a leadership role in an academic program, department, research unit or major public health agency.
2. Bring a distinguished record of funded research and nationally recognized scholarship.
3. Demonstrate commitment to both graduate and undergraduate education.
4. Have administrative and financial management experience.
5. Hold a doctoral degree related to one of the five core disciplines of public health.
6. Be eligible for tenured appointment at the rank of Full or Associate Professor.

CHARACTERISTICS OF THE IDEAL CANDIDATE

The ideal candidate for this position will:

1. Show commitment to building departmental programs in the five core areas of public health.
2. Have the vision and ability to work with faculty to develop new governance structures that support the expansion of the Department.
3. Be dedicated to mentoring and developing creative approaches to supporting and rewarding both tenure and non-tenure track faculty.
4. Embrace the challenges of leading a dynamic, growing faculty that has expanded rapidly and will continue to grow in coming years.
5. Value and foster interdisciplinary collaboration to enable the Department to expand public health initiatives with the Schools of Medicine, Law, Dentistry, and Pharmacy and the Colleges of Education and Social Administration
6. Serve as an integral unit of the College in providing leadership to the other departments, centers and units of the College with the goal of integrating public health into all of the health professions within the health sciences center at the University.
7. Be committed to the vision of Temple University's founding president of widening opportunities for diverse populations to access excellence in higher education.
8. Value and foster collaboration with the diverse professional public health communities within Philadelphia, and Pennsylvania and the Mid-Atlantic region.
9. Show evidence of effective interpersonal communication skills.
10. Be committed to the advancement of the student body, in academic training, research and leadership in the public health community at the local, state, and national levels.
11. Uphold the values of cultural diversity, affirmative action and equal opportunity through concrete actions in a multi-cultural and multi-ethnic environment with a growing focus on global perspectives.
12. Show evidence of integrity, patience and flexibility in dealing with a growing Department, College and University.
13. Have a vision for fostering Department-wide research and teaching excellence.

14. Have a vision for creating both excellent and efficient educational programs, as well as a commitment to increasing the reach of the Public Health training programs using online courses where appropriate.

TERM OF OFFICE

The faculty of the Department of Public Health forwards recommendations for the Chair position to the Dean of the College of Health Professions, who appoints the Chair for a term of three to five years. The Chair may serve multiple terms.

RESPONSIBILITIES OF THE POSITION

General Responsibilities

Responsibilities include day-to-day management of the Department's administration, academic programs, financial management, personnel management, scholarship and research. Also key are: mentoring of faculty in research activities and recruiting key research, educational and clinical faculty given the number of new and projected hires over the next few years.

The Chair provides creative leadership in public health scholarship for a Department recognized for excellence in teaching and research within a diverse urban community. The Chair is a member of the faculty who is the academic and administrative officer of the Department, reporting to the Dean of the College of Health Professions. The Chair represents the Department within the College, the University and the community. The position requires collaborative work with faculty, other department chairs, persons with administrative responsibilities throughout the University and community members and leaders. The Chair interprets trends in public health and related health sciences disciplines to University administrators and serves as a liaison between the University and public health education. The Chair also serves as a liaison between the academic community at Temple University and the community.

Specific Responsibilities

Academic Responsibilities

- Maintain academic standards that reflect the requirements of the University and accrediting agencies.
- Collaborate with faculty and administration in the planning, implementation, and evaluation of the curriculum.
- Foster the development and maintenance of educational and research programs of high quality and professional relevance that are supportive of the mission and goals of the University.
- Encourage interdisciplinary and transdisciplinary approaches to public health.
- Work with the faculty to establish core-courses for each of the graduate and undergraduate programs and adopt standard, long-term curricula for all degree and certificate programs.
- Respond to current and emerging issues in public health by reflecting such changes in the curriculum.

- Position Temple's Department of Public Health as a leader among academic programs in the greater Philadelphia area.
- Assure ongoing outcome-based assessment of Department programs, projects, and initiatives for purposes of maintaining quality and strategic planning.
- Provide teaching in relation to program needs and capacity given level of external funding and administrative responsibilities.

Financial Responsibilities

- Assess Department resource needs, prepare a budget for the Department, and make budget recommendations to the Dean of the College of Health Professions.
- Work with the Business Manager to administer the Department budget, including grants, endowments, and other special accounts.
- Seek additional sources of financial support for the Department and its special projects from external sources, including individual donors, and grant funds.

Personnel Responsibilities

- Execute personnel policies in accordance with University policies, including the Faculty Guide and the TAUP contract.
- Identify, attract, and retain talented and committed staff.
- Identify, attract, retain, and cultivate outstanding faculty.
- Maintain open lines of communication with faculty, staff and students.
- Recommend to the Dean of the College faculty for appointment, reappointment, promotion and/or tenure, and merit allocation for faculty, using established procedures and in accordance with College Bylaws.
- Evaluate, encourage and acknowledge faculty annually.
- Supervise and evaluate department staff in the performance of their assigned duties.

Scholarship and Research Responsibilities

- Maintain an active, funded program research
- Maintain scholarship and research visibility through publications and presentations
- Foster an environment supportive of faculty research and scholarly productivity.
- Serve as a leader in identifying research and scholarship opportunities and sources of external support for faculty and/or Departmental programs of research, special projects, and scholarly activities.
- Stimulate and support faculty development as researchers, scholars, teachers, and expert clinicians.

Administrative Responsibilities

- Bring a vision for the Department over the next 5 to 10 years that will move public health at Temple University forward toward becoming a school or college and a major area of excellence at the University.
- Enhance visibility to foster recognition of Temple University as a national and global leader in public health.
- Implement and update the Departmental strategic plan, in collaboration with faculty.
- Develop and maintain an administrative structure within the Department that supports academic programs and achievement of Departmental goals.

- Maintain efficient and effective systems for implementing the work of the Department, including assigning duties, establishing priorities and time lines for completion, and assuring supervision and evaluation.
- Oversee hiring and supervision of teaching assistants.
- Promote a positive and open environment for faculty, staff and students by being approachable and receptive to open dialogue.
- Provide structures and resources for promoting excellent teaching, particularly among faculty with high research and service loads.
- Balance overall work loads within the department taking into account the importance of fostering excellence in both teaching and research with faculty who have different combinations of research, teaching and service responsibilities.
- Oversee the maintenance of appropriate Departmental records, including student records and reports.
- Attend and chair Faculty Assembly meetings and serve as a member of Department committees as appropriate.
- Oversee departmental student services including recruitment, admission, retention, and progression of students, in collaboration with the Department Administrative Assistant and appropriate units of the University.
- Foster alumni relations.
- Promote open, productive communication among faculty and encourage discussion of issues, problems, concerns, and opportunities.
- Maintain productive working relationships with the Dean, other department chairs, and faculty members throughout the University.
- Represent the Department at the College Executive Committee and other appropriate administrative committees.
- Coordinate Departmental activities with those of the College and the University.
- Represent public health education perspectives and priorities, and the Department to individuals and groups within the College, the University, the professional community and the community-at-large.
- Understand the goals of the University and College, interpret them to the faculty, and use them as the basis for decision-making.
- Perform other duties as may be assigned by the Dean of the College or other administrative officers of the University.

TO APPLY:

The Search Committee for the Chair of the Department of Public Health will review applications beginning immediately, and will continue to do so until the position is filled. Please send CV with cover letter, **preferably by email**, in strict confidence to:

Sharon M. Flynn Hollander or Dr. Clifford R. Hollander
The Hollander Group
Info@thehollandergroup.net
 202-486-9097

Temple University is an equal opportunity/affirmative action employer

ABOUT THE DEPARTMENT OF PUBLIC HEALTH

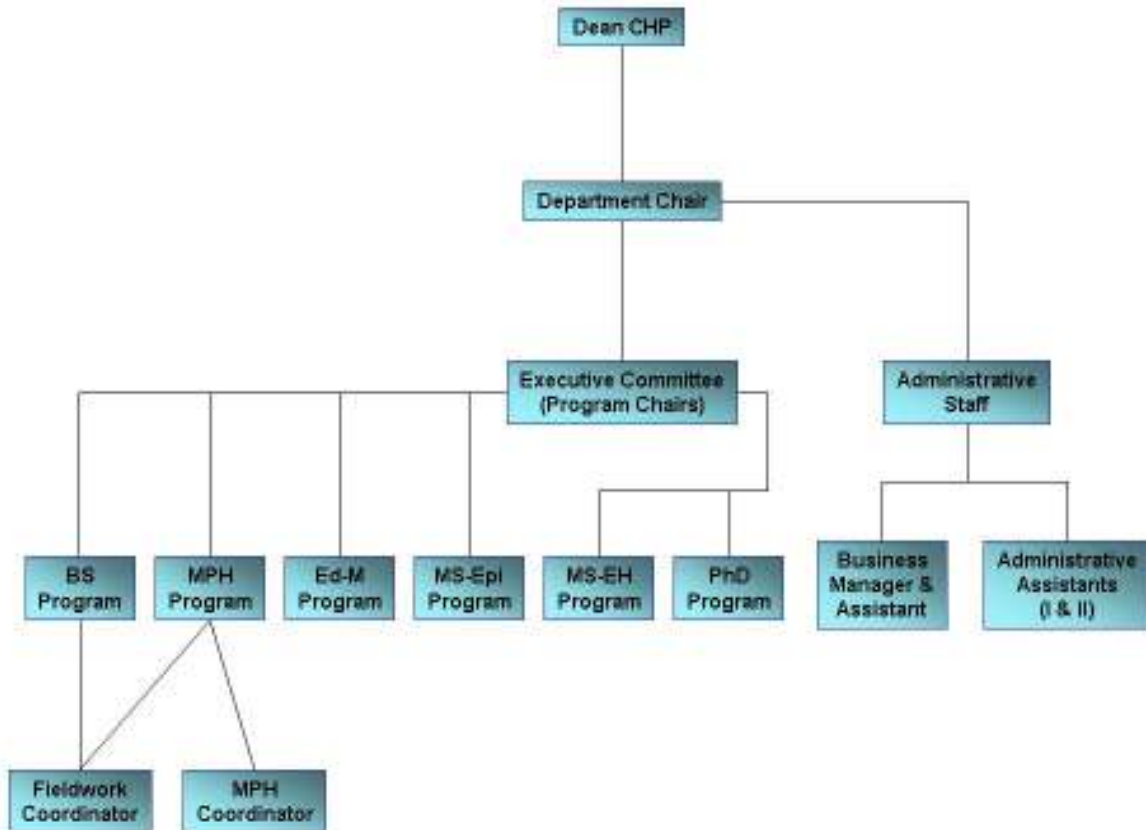
Mission Statement

The Department of Public Health promotes and protects public health through quality education, research, and service. We emphasize disease prevention and treatment, empowerment, and collective as well as individual responsibility for health and health care. Our collaborative partnerships contribute to meeting local, state, national and global public health needs through conducting research, training a diverse workforce, and promoting excellence in practice.

Vision Statement

The Department of Public Health excels as a regional and national leader by fostering interdisciplinary collaboration among researchers, educators, community practitioners, and private sector leaders. We strive to address community health needs in a global community to eliminate health disparities, and to increase the quality and years of healthy life.

Administrative and Academic Structure



Public Health Degree Programs

Undergraduate:

- Bachelor of Science (BS) in public health,
- Minor in public health.

Graduate:

- Master of Public Health (MPH)
- Master of Education in School Health Education (EdM)
- Master of Science in Environmental Health (MSEnvH)
- Master of Science in Epidemiology (MS in Epi)
- Doctor of Philosophy (PhD) in Public Health

Each degree program is described briefly below.

Bachelor of Science in Public Health: Public Health majors take a set of common theoretical courses designed to promote an understanding of health, wellness and disease prevention. They study the broad range of public health concerns from individual disease prevention and injury/harm reduction behaviors to organizational and community program development, implementation and evaluation. Graduates find entry-level positions in health agencies, public health departments, hospitals, rehabilitation centers, corporate worksites, community health organizations, family planning clinics, and managed care facilities.

Minor In Public Health: The undergraduate minor requires 21 semester hours of course work that reflects the diversity within the field of Public Health. The Minor prepares students to understand the core principles and issues related to Public Health practice.

Master of Public Health (MPH): Temple University's MPH program was the first program accredited by CEPH in the Delaware Valley and one of the first programs accredited outside a School of Public Health. The MPH degree has separate concentrations in Social and Behavioral Science, Environmental Health, Epidemiology and Biostatistics, and Global Health. The MPH provides breadth in social, environmental, and behavioral aspects of health, the analytic sciences of epidemiology and biostatistics, and principles of health service management, including program planning, evidence-based practice, and evaluation in addition to concentration in the specific concentrations.

Master of Science (MS) in Environmental Health: The Environmental Health MS program, with concentration in Environmental and Occupational Health and Safety, focuses on the scientific study of intersecting environmental factors affecting health, including studies of chemicals and microbes in air, water and soil; physical factors such as noise, radiation, thermal stress, and repetitive motion; and emergent issues such as the health consequences of global climate change and preparation and response to bio-terrorism.

Master of Education (EdM) in School Health Education: The School Health Education EdM program is designed for school personnel (teachers, counselors, nurses) and those working with youth in community settings who want to advance their knowledge and understanding of health curricula, instruction, and counseling based on public health concepts of health promotion and disease prevention. The program incorporates current principles of community health program planning and evaluation as well as health counseling.

Master of Science in Epidemiology (MS in Epi): The Epidemiology MS program provides training in research techniques appropriate to conduct epidemiologic studies in a particular concentration related to the distribution and causes of disease and injury in human populations. The program provides training in the two main arms of epidemiology: (a) Descriptive Epidemiology: surveillance and monitoring of disease outbreaks, including prevalence and incidence and (b) Analytic Epidemiology: development and evaluation of research hypotheses concerning the effects of risk factors (hereditary, behavioral, environmental, and health care) on human health. Graduates work in applied settings conducting disease surveillance and outbreak investigations, or in research settings, developing and evaluating research hypotheses to understand the effects of biological, environmental, social and behavioral factors on human health.

Doctor of Philosophy (PhD) in Public Health: The Public Health PhD program prepares students for advanced research and scholarship. Supported by an esteemed research faculty, students receive training and experiences that promote interdisciplinary learning, theory-driven approaches to research, and critical problem-solving skills to address public health problems. The program also fosters the development of public health professional values and ethics. All students in the program complete common core course requirements, which include foundational courses in epidemiology, biostatistics, history of public health, bioethics, and theories of health behavior, in addition to being introduced to critical public health research methods and statistical techniques. Students also take specialized courses in their chosen concentration and engage in research and scholarly productivity with faculty members. Students work closely with faculty mentors on a wide-range of public health research and evaluation projects, including sponsored research projects in health promotion, disease prevention, and epidemiology in each of the two areas of specialization: (a) Social and Behavioral Health Sciences and (b) Environmental Health and Health Policy.

Department of Public Health Faculty Profile

Of the 25 full-time faculty members, 11 are tenured, 6 are tenure track, and 8 are non-tenured. In addition to these 25 faculty members there are currently 25 Adjunct, 10 Secondary, and 2 under review for a Joint appointment. The following table summarizes the 2008 appointments of faculty members and instructors in the Department of Public Health by rank and type:

Appointment Rank/Type	Number
Professor	9
Associate Professor	3
Assistant Professor	5
Associate Professor (Research)	2
Associate Professor (Clinical)	2
Assistant Professor (Clinical)	1
Instructor (Teaching/Instructional Track)	3

The Department is being reorganized from a focus on degree programs to a structure that emphasizes four broad, cross-disciplinary clusters: Environmental Health, Biostatistics and Epidemiology, Social and Behavioral Sciences, Public Health Systems and Policy.

The Department seeks to advance a high level of scholarship, academic achievement and community service through the activities of students and faculty. The faculty of the Department endeavor to create a learning community that attracts scholars and students who will improve the health of individuals, families and communities and participate in the transformation of the public health profession.

Faculty members have worked or been trained in excellent programs from around the country, including Harvard, Columbia, Princeton, University of Pittsburgh, the Universities of California, the SUNYs, Yale, Brown, Duke, Michigan State, Johns Hopkins, the University of North Carolina and the University of Pennsylvania. They regularly publish in top-notch public health and specialty journals, including *Archives of General Psychiatry*, *JAMA*, *The Lancet*, *American Journal of Public Health*, *Archives of Internal Medicine*, *Cancer*, *Annals of Behavioral Medicine*, *Pediatrics*, *Health Psychology*, *Psychosomatic Medicine*, *Ergonomics*, *Journal of Consulting & Clinical Psychology*, *Journal of Occupational & Environmental Hygiene*, *Social Science & Medicine*, *Epidemiology and Infection*, and *American Journal of Preventive Medicine*. Finally, faculty members are investigators on numerous grant awards, with a strong record of funding from federal agencies, including the Centers for Disease Control, the National Science Foundation, and the National Institutes of Health (e.g. NCI, NIE, NHLBI, NIMH, NICHD); state and local government agencies (e.g. Pennsylvania and Philadelphia Departments of Health); and private foundations (e.g. American Cancer Society, Susan B. Komen, Robert Wood Johnson, Pew Foundation). Nationwide, the College of Health Professions currently ranks third among its peers in federal grant funding.

Public Health Research Centers and Laboratories

Faculty members are positioned in a number of centers and labs within the Department of Public Health, the College of Health Professions, and Temple University that are designed to study, develop, and evaluate public health practices, interventions and policies aimed to resolve significant public health problems (e.g., obesity, tobacco exposure, ethnic and racial disparities in cancer, violence, inadequate disaster preparedness). These centers and labs provide opportunities for research placements for doctoral students, assist students in developing papers for publication and presentation at conferences, provide professional socialization, and help students to define theses and dissertations related to funded studies. The centers and labs also provide opportunities for internships and research assistantships.

Specific centers and labs include:

- Biostatistics Research Support Center (BRSC)
- Center for Asian Health (CAH)
- Center for Obesity Research and Education (CORE)
- Center for Preparedness Research, Education, and Practice (C-PREP)
- Ergonomics and Work Physiology Lab (EWP)
- Health Behavior Research Clinic (HBRC)
- Risk Communication Lab (RCL)
- Social & Behavioral Health Intervention Lab (SBHI)

Public Health Organizations

Faculty members hold leadership roles on the boards and committees of numerous public health agencies in the region. In addition, community Fieldwork Preceptors supervise both undergraduate and graduate fieldwork and internships, linking the university with the community to foster education for public health practice that bridges research, policy and program development.

Department of Public Health Student Profile

The 2008 profile of students in the Department of Public Health is:

Undergraduate Students:

Majors: 194

Minors: 50

Graduate Students:

Master's Programs: 49

PhD Program: 23

Accreditation

The Council on Education for Public Health (CEPH) has accredited the MPH program in the Department of Public Health for over twenty years. The Department has submitted a self-study for the accreditation review scheduled for October 2008.

ABOUT THE COLLEGE OF HEALTH PROFESSIONS

The Department of Public Health is located within the College of Health Professions (CHP). The CHP offers fully accredited undergraduate and graduate programs in seven areas, including eight bachelors, nine masters and five doctoral degrees in the following areas: Communication Sciences, Health Information Management, Kinesiology, Nursing, Occupational Therapy, Physical Therapy, Public Health, and Therapeutic Recreation. The College excels as a regional and national leader in education of health professionals and innovative health-related research. The College fosters interdisciplinary collaboration among students, staff, industry leaders, clients and the communities to better address health needs, eliminate disparities in care, increase lifespan and improve quality of life. The research and educational programs in public health are central to the College's values and vision for becoming a leader in health care research and education within the College.

Research and Scholarly Activity

The College of Health Professions engages in exciting, innovative research and supports talented, committed researchers. The CHP ranks #3 in NIH funding to schools of health professions nationwide. Over the past five years, the College has strengthened its research mission by:

- Increasing incentives and resources for faculty to obtain grants and publish research.
- Encouraging faculty to seek research funds creatively, from such non-governmental sources as corporations and foundations.
- Encouraging collaborative research.
- Developing a research infrastructure supported by best practices and outstanding staff.

- Creating awareness among students of faculty research and opportunities for research assistantships.
- Providing research opportunities for students.
- Ensuring sufficient support to train faculty, students, administrators, and staff in the uses of new technologies.

Multidisciplinary Environment

The College of Health Professions benefits from proximity to the Temple School of Medicine and Dentistry on the Health Sciences Campus, as well as programs on the Main Campus. The Department of Public Health is located on the Main Campus, 1 mile south of the Health Sciences Campus. This combined environment expands students' intellectual exposure, enhances learning, encourages scientific inquiry, sharpens clinical performance and produces professionals who are prepared, intellectually and practically, to work in multi-disciplinary, collaborative settings.

ABOUT TEMPLE UNIVERSITY

Founded in 1884 by Dr. Russell Conwell, Temple College was chartered in 1888 and became Temple University in 1907. As a comprehensive public research university, Temple enrolls 34,000 in 300 academic degree programs, including: 2 associate degree programs, 125 bachelors programs, 113 masters programs, 52 doctoral programs, and 8 first-professional degree programs in the fields of dentistry, law, medicine, pharmacy, and podiatric medicine.

In addition to the Main Campus and Health Science Center, Temple University has a suburban campus in Ambler and a downtown satellite campus. The University has global reach with well-established campuses in Rome and Tokyo and programs in London, Beijing, Paris and Mumbai.

Temple has robust educational and research enterprises, with collaborations spanning the University, community, and state, national and international levels. These enterprises are energized by partnerships with other universities, businesses and other organizations. The University's 115-acre Main Campus and its 17-acre Health Sciences Center will be the primary sites of more than \$500 million in construction and renovation over the next several years.

ABOUT PHILADELPHIA

Philadelphia is the center of a dynamic metropolitan area less than two hours from both New York City and Washington, DC, via Amtrak rail service. Philadelphia International Airport is accessible from Temple University via the Regional Rail line. The region boasts affordable housing within easy commuting distance on excellent public transportation, making Philadelphia a very attractive place to live and work.

Philadelphia has an active public health community that meets often through the Section on Public Health of the College of Physicians, founded in 1787. Throughout its 200-year history, the College has provided a place for both medical professionals and the public to learn about medicine as both a science and as an art. The College is a leader in health care education and research in the community sponsoring lectures, workshops, and conferences including an annual

Public Health Poster Session in which public health programs in the region participate. The Section on Public Health provides a forum for sharing research, policy and practice and provides newcomers to the region easy entree for becoming part of the wider public health community.

Philadelphia is also known as the “Cradle of Liberty,” with historical sites throughout the region including Independence National Historical Park, including the Liberty Bell and Independence Hall. Cultural, culinary, artistic and ethnic treasures abound in the region and surrounding countryside. The fifth-largest city in the country, Philadelphia is a diverse and welcoming place known for new and one-of-a-kind attractions, a wealth of art and culture, renowned performing arts companies, awe-inspiring architecture, and a walkable downtown within 20 minutes of Temple’s Main Campus.